

## Watershed Conservation

A watershed can be compared to a large basin that captures all the precipitation that falls within the highpoints or ridgelines in a landscape and carries this to a common outlet. Managing the water resources within a watershed provides an effective framework for both surface and groundwater conservation and protection.

### The District does this by:

- Coordinating a long-term, county-wide surface water quality monitoring program, to assess and track water quality in Pike County.
- Partnering with the US Geological Survey to gather information on Pike County's groundwater resources through a well level monitoring program.
- Participating in the Pocono Source Water Protection Collaborative, which focuses on raising awareness and helping local officials, water suppliers, homeowners, emergency management officials, concerned citizens and community stakeholders take action to protect Pike County's drinking water.
- Providing education and outreach opportunities on watershed management and groundwater recharge.



Stoni Stonefly,  
the District's mascot



## Education and Outreach

Conservation education and outreach efforts are a major emphasis of the District. Programs reach audiences of all ages focusing on a wide variety of conservation topics.

These include: water quality and quantity, watersheds, wetlands, pollinators, sediment pollution prevention, and how all of these relate to the unique qualities of Pike County.

### The District provides outreach through:

- Classroom and community education programs
- Municipal workshops and outreach
- Environmental Education Project Grants
- Pike/Wayne Envirothon
- Workshops, technical assistance, and outreach to residents and businesses on environmental permitting
- Regular communication with local, state, and federal legislators regarding conservation issues

## Partners

Much of the work of the Conservation District, whether educational, technical, or administrative, is accomplished through collaborative efforts with local, state, and federal agencies and organizations.

The District could not accomplish all we do without the strong commitment and assistance from these partners, as well as the Pike/Wayne Conservation Partnership, Pocono Source Water Protection Collaborative, and all the community members and organizations who support us.



Pike County  
Conservation District

556 Route 402 • Hawley, PA 18428

PHONE: 570-226-8220

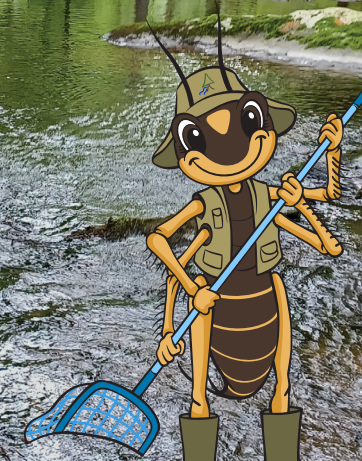
EMAIL: [pikecd@pikepa.org](mailto:pikecd@pikepa.org)

WEB: [pikeconservation.org](http://pikeconservation.org)

  [pikeconservation](https://www.facebook.com/pikeconservation)



Pike County  
Conservation District



  [pikeconservation](https://www.facebook.com/pikeconservation)

## Our Mission

**Pike County Conservation District (the District) is committed to the long-term protection and sustainable use of Pike County's natural resources. We accomplish this through partnership, education, technical assistance, planning, enforcement, and leadership.**

### What is a Conservation District?

Pike County Conservation District was established in 1956 by the Pike County Board of Commissioners and has worked actively since then to carry out programs focused on conservation of soil, water, and natural resources.

The District is governed by a Board of Directors who meet monthly to help plan programs, guide staff, and coordinate efforts which provide conservation assistance and education in Pike County. District staff provide technical assistance for residents on natural resource and watershed conservation, groundwater protection, grant writing, and program administration.



#### Grant Funds

*A District board member and a Penn State Master Gardener preparing the Dingman Township Park Pollinator Gardens.*

*Pike County winning 2024 Envirothon team with Pike County Commissioner Matt Osterberg (left).*



### Sediment is the #1 Pollutant to Waters of the Commonwealth

Managing sediment and preventing it from entering our waterways is essential to reducing sediment pollution.

Earth disturbance activities are regulated under Pennsylvania Department of Environmental Protection (PA DEP) **Erosion and Sediment Control Program** (Chapter 102). Chapter 102 requires land developments or persons proposing or conducting earth disturbance activities to develop, implement and maintain Best Management Practices (BMP's) to minimize the potential for sediment runoff. It also requires management of post construction stormwater through a National Pollutant Discharge Elimination System (NPDES) plan and permit for projects of a certain size to protect water quality.

PA DEP **Waterways Management** (Chapter 105) program provides oversight of work in and around streams, wetlands, and other bodies of water that has a potential to impact water quality, increase flooding or degrade riparian (streamside) habitat. The District administers the Chapter 102 and Chapter 105 programs in Pike County.

The District prevents sediment pollution by:

- Education and outreach on sediment pollution prevention and wetlands identification
- Permit application and plan submission reviews
- Site inspections for potential pollution events
- Site inspections and technical assistance for projects under construction
- Information and technical assistance to landowners on regulatory and permitting concerns

### Agriculture Conservation Assistance Program (ACAP)

The District has a signed agreement with the State Conservation Commission to administer the Agriculture Conservation Assistance Program (ACAP). The program was created through the Clean Streams Fund established by Pennsylvania State Budget in 2022.

ACAP provides financial and technical assistance for the implementation of best management practices (BMPs) on agricultural operations to reduce non-point source pollution in our waterways.



### Environmentally Sensitive Dirt, Gravel, and Low Volume Road Maintenance Program

The District administers this grant program which provides funding for environmental road improvement projects on unpaved and low-volume paved roads.

The District's Quality Assurance Board accepts and reviews applications and awards grants to local municipalities and/or state agencies with jurisdiction over dirt, gravel, and low volume roads within Pike County. The main focus of the program is helping to prevent sediment runoff from roads from entering waterways.

