

The background features abstract, overlapping green geometric shapes, primarily triangles and polygons, in various shades of green, creating a modern and dynamic look.

# Completing an Erosion and Sediment (E&S) Control Plan

For Earth Disturbance Activities Less  
Than 1.0 Acre

Commonwealth of Pennsylvania  
**Pennsylvania Code**

**Title 25. Environmental Protection**

Department of Environmental Protection  
Chapter 102. Erosion and Sediment Control



Department of Environmental Protection  
Bureau of Water Quality Protection  
Division of Waterways, Wetlands and Erosion Control  
Rachel Carson State Office Building, 10th Floor  
400 Market Street  
Harrisburg, PA 17101-2301  
(717) 787-6827

Printed on May 15, 2000

**25 § 102.4**

**ENVIRONMENTAL PROTECTION**

Pt. 1

(2) A person proposing earth disturbance activities shall develop a written Erosion and Sediment Control Plan under this chapter if one or more of the following criteria apply:

(i) The earth disturbance activity will result in a total earth disturbance of 5,000 square feet (464.5 square meters) or more.

(ii) The person proposing the earth disturbance activities is required to develop an Erosion and Sediment Control Plan pursuant to this chapter under Department regulations other than those contained in this chapter.

(iii) The earth disturbance activity, because of its proximity to existing drainage features or patterns, has the potential to discharge to a water classified as a High Quality or Exceptional Value water pursuant to Chapter 93 (relating to water quality standards).

(3) The Erosion and Sediment Control Plan shall be prepared by a person trained and experienced in erosion and sediment control methods and techniques, and shall be designed to minimize the potential for accelerated erosion and sedimentation.

(4) Earth disturbance activities shall be planned and conducted to minimize the extent and duration of the disturbance.

(5) The Erosion and Sediment Control Plan shall contain the following:

(i) The existing topographic features of the project site and the immediate surrounding area.

(ii) The types, depth, slope, locations and limitations of the soils.

(iii) The characteristics of the earth disturbance activity, including the past, present and proposed land uses and the proposed alteration to the project site.

(iv) The amount of runoff from the project area and its upstream watershed area.

(v) The location of waters of this Commonwealth which may receive runoff within or from the project site and their classification pursuant to Chapter 93.

(vi) A written depiction of the location and type of perimeter and onsite BMPs used before, during and after the earth disturbance activity.

(vii) A sequence of BMP installation and removal in relation to the scheduling of earth disturbance activities, prior to, during and after earth disturbance activities.

(viii) Supporting calculations.

(ix) Plan drawings.

(x) A maintenance program which provides for inspection of BMPs on a weekly basis and after each measurable rainfall event, including the repair of the BMPs to ensure effective and efficient operation.

(xi) Procedures which ensure that the proper measures for the recycling or disposal of materials associated with or from the project site will be undertaken in accordance with this title.

Please note:

Almost all of Pike County Watersheds are classified as High Quality or Exceptional Value; therefore, a written erosion and sediment control plan is required to be developed and implemented regardless of the earth disturbance size. Please contact the Pike County Conservation District at 570-226-8220 or [piked@pikepa.org](mailto:piked@pikepa.org) for more information on plan requirements.

- ▶ **EARTH DISTURBANCE ACTIVITY** - A construction or other human activity which disturbs the surface of the land, including, but not limited to, clearing and grubbing, grading, excavations, embankments, land development, agricultural plowing or tilling, operation of animal heavy use areas, timber harvesting activities, road maintenance activities, oil and gas activities, well drilling, mineral extraction, and the moving, depositing, stockpiling, or storing of soil, rock or earth materials.





## Pike County Conservation District

556 Route 402, Suite 1  
Hawley, PA 18428  
[www.pikeconservation.org](http://www.pikeconservation.org)

Phone: 570-226-8220  
Fax 570-226-8222  
Email: [pikecd@pikepa.org](mailto:pikecd@pikepa.org)

### Erosion and Sediment Control Plan Worksheet

This worksheet is provided by the Pike County Conservation District (District) to help guide those unfamiliar with Erosion and Sediment Control regulations. This worksheet may not be acceptable for all projects. Contact the District to determine if this worksheet is appropriate for your project. The District may request further information beyond this worksheet prior to plan approval.

PLEASE PRINT. Please do not leave blank spaces. Incomplete information will cause a delay in processing and approval of paperwork. If you are unsure of specific information, please inquire with the District prior to submitting.

#### Project Information

Project Name:	John Doe Single Family Home		
Application Date:	01/25/2018		
Project Type:	New Home Construction		
Brief description of project:	Construction of Single Family Home with Driveway Access and On-Lot Septic System		
Receiving Stream(s):	Shohola Creek	Chapter 93 Classification*:	HQ-CWF, MF
Total Project Area (Acres):	2.5 Acres	Total Disturbed Area (Acres)**:	0.80 Acres

#### Landowner Information

Name:	John Doe		
Address:	555 ABC Drive		
City:	Hawley	State:	PA
		Zip:	18428
Phone:	(555) 555-5555	Email:	JDOE@gmail.com

#### Contact Person (If Different than Landowner)

Name:	
Phone:	
Email:	

#### Contractor Information (If Known)

Company Name:	XYZ Excavation
Phone:	(555) 123-4567
Email:	XYZExcavation@gmail.com

\*Chapter 93 Classification – Exceptional Value (EV), High Quality (HQ), Cold Water Fishery (CWF), Warm Water Fishery (WWF), etc. This can be found on the web at: [www.pacode.com/secure/data/025/chapter93/s93.9i.html](http://www.pacode.com/secure/data/025/chapter93/s93.9i.html) or seek guidance from the District.

\*\* Use Page 2 to determine Total Disturbed Area



# Chapter 93 Classification

## CHAPTER 93. WATER QUALITY STANDARDS

### GENERAL PROVISIONS

Sec.

- 93.1. [Definitions.](#)
- 93.2. [Scope.](#)
- 93.3. [Protected water uses.](#)
- 93.4. [Statewide water uses.](#)

### ANTIDEGRADATION REQUIREMENTS

- 93.4a. [Antidegradation.](#)
- 93.4b. [Qualifies as High Quality or Exceptional Value Water.](#)
- 93.4c. [Implementation of antidegradation requirements.](#)
- 93.4d. [Processing of petitions, evaluations and assessments to change a designated use.](#)
- 93.5. [\[Reserved\].](#)

### WATER QUALITY CRITERIA

- 93.6. [General water quality criteria.](#)
- 93.7. [Specific water quality criteria.](#)
- 93.8. [\[Reserved\].](#)
- 93.8a. [Toxic substances.](#)
- 93.8b. [Metals criteria.](#)
- 93.8c. [Human health and aquatic life criteria for toxic substances.](#)
- 93.8d. [Development of site-specific water quality criteria.](#)
- 93.8e. [Special criteria for the Great Lakes System.](#)

### DESIGNATED WATER USES AND WATER QUALITY CRITERIA

- 93.9. [Designated water uses and water quality criteria.](#)
- 93.9a. [Drainage List A.](#)
- 93.9b. [Drainage List B.](#)
- 93.9c. [Drainage List C.](#)
- 93.9d. [Drainage List D.](#)
- 93.9e. [Drainage List E.](#)

### § 93.9c. Drainage List C.

Delaware River Basin in Pennsylvania  
*Delaware River*

Stream	Zone	County	Water Use Protected	Exceptions To Specific Criteria
1—Delaware River	Main Stem, Lackawanna River to Tocks Island	Pike	WWF, MF	See DRBC regulations—Water Quality Zone IB 1C
2—Unnamed Tributaries to Delaware River	Basins, Lackawanna River to Tocks Island	Pike	HQ-CWF, MF None	
2—Parther Creek	Basin	Pike	HQ-CWF, MF None	
2—Shohola Creek	Basin	Pike	HQ-CWF, MF None	
2—Twin Lakes Creek	Basin	Pike	HQ-CWF, MF None	
2—Pond Eddy Creek	Basin	Pike	HQ-CWF, MF None	
2—Bush Kill	Basin	Pike	EV, MF None	
2—Rosenown Creek	Basin	Pike	HQ-CWF, MF None	
2—Cummins Creek	Basin	Pike	HQ-CWF, MF None	
2—Crawford Branch	Basin	Pike	HQ-CWF, MF None	
2—Vandermark Creek	Basin, Source to Deep Brook	Pike	HQ-CWF, MF None	
1—Deep Brook	Basin	Pike	EV, MF None	
2—Vandermark Creek	Basin, Deep Brook to Mouth	Pike	HQ-CWF, MF None	
2—Saw Kill Creek	Basin, Source to Vantine Brook	Pike	EV, MF None	
1—Vantine Brook	Basin	Pike	HQ-CWF, MF None	
2—Saw Kill Creek	Basin, Vantine Brook to Mouth	Pike	EV, MF None	
2—Raymond Kill	Basin	Pike	HQ-CWF, MF None	
2—Conasaugh Creek	Basin	Pike	HQ-CWF, MF None	
2—Dry Brook	Basin	Pike	HQ-CWF, MF None	
2—Adams Creek	Basin	Pike	EV, MF None	
2—Dagman's Creek	Basin	Pike	HQ-CWF, MF None	
2—Hornbecks Creek	Basin	Pike	HQ-CWF, MF None	
2—Toms Creek	Basin	Pike	EV, MF None	
2—Bush Kill	Basin, Source to Saw Creek	Pike	HQ-CWF, MF None	
1—Saw Creek	Basin	Pike	HQ-CWF, MF None	
2—Bush Kill	Main Stem, Saw Creek to Mouth	Monroe	HQ-TSE, MF None	
1—Unnamed Tributaries to Bush Kill	Basins, Saw Creek to Mouth	Monroe	HQ-CWF, MF None	

### Project Location

Municipality: Shohola Have you contacted the Municipality? ☒ Yes ☐ No

If yes, with whom did you speak with at the Municipality? Joe Dirte

Give specific directions for locating the project site. Include distances, landmarks, or special features. Include a topographic map \*\*\*. Please make sure that property corners and proposed driveway entrance are marked on map

From I-84 Westbound: Take Exit 30 Blooming Grove to Route 402 North; From Route 402 North turn right onto Route 6 East; Travel 2.6 Miles then turn left onto Tree Stump Road; Travel 1.2 Miles on Tree Stump Road; Destination on right.

Please describe the past, present and proposed land uses:

Past: Forested Lot; Present: Forested Lot; Proposed: Single Family Home

Please describe your project and the extent of earthmoving:

Construction of new single family home. Clear / Grub Site / Grade; Construct Home including On-Lot Septic, Driveway/Parking Area, Detached Garage, and Swimming Pool.

Is this parcel part of any larger development? ☐ Yes ☒ No

If yes, please give name and phase of development: N/A

### Project Specifics

Estimated Dates for Project: Start March 2018 End April 2018

Are there slopes in excess of 10% within your project boundaries, or in the immediate area? ☐ Yes ☒ No

Is the earth disturbance in a mapped FEMA Floodway or within 50' of a Water of the Commonwealth\*\*\*\*? ☐ Yes ☒ No

### Total DISTURBED Area Calculation

	Total Length (ft.)		Total Width (ft.)		Area (sq. ft.)
Access Road/ Driveway	<u>200</u>	X	<u>10</u>	=	<u>2000</u>
Foundation/ Building #1	<u>50</u>	X	<u>35</u>	=	<u>1750</u>
Foundation/ Building #2	<u>20</u>	X	<u>20</u>	=	<u>400</u>
Lawn/ Landscape Area		X		=	<u>0</u>
Water/Sewer/Septic	<u>25</u>	X	<u>30</u>	=	<u>750</u>
Other	<u>200</u>	X	<u>150</u>	=	<u>30000</u>
			Total Area (sq. ft.)		<u>34900</u>
Total Area (sq. ft.)	<u>34900</u>	/	<u>43,560</u>	=	<u>0.8011937557392103</u> Acres

\*\*\* Topographic maps can be obtained from [nationalmap.gov/ustopo/index.html](http://nationalmap.gov/ustopo/index.html).

\*\*\*\*Waters of this Commonwealth: "Rivers, streams, creeks, rivulets, impoundments, ditches, watercourses, storm sewers, lakes, dammed water, wetlands, ponds, springs and other bodies or channels of conveyance of surface and underground water, or parts thereof, whether natural or artificial, within or on the boundaries of this Commonwealth."

Earth Disturbance activities shall be planned and conducted to minimize the extent and duration of the disturbance. Please take this into account when planning and designing your earthmoving project.

The implementation and maintenance of erosion and sediment BMP's (Best Management Practices) are required to minimize the potential for accelerated erosion and sedimentation, including those activities which disturb less than 5,000 square feet. This means regardless if a plan is reviewed by the Conservation District, BMP's (E&S controls) must be in place, operated properly, and maintained throughout the life of the project.

#### Temporary BMP Controls

This section details any and all temporary erosion control best management practices (BMPs) that will be implemented in your project. Check each temporary control that will be used and show it on the plan drawing on Page 6.

- |  |   |
|--|---|
| <input checked="" type="checkbox"/> Rock Construction Entrance | <input type="checkbox"/> Culvert                        |
| <input type="checkbox"/> Filter Fabric Fence (Silt Fence)      | <input type="checkbox"/> Crowned Roadway                |
| <input type="checkbox"/> Rock Filters                          | <input type="checkbox"/> Roadside Ditch                 |
| <input checked="" type="checkbox"/> Compost Filter Sock        | <input type="checkbox"/> Ditch Relief Culvert           |
| <input type="checkbox"/> Temporary Swale                       | <input type="checkbox"/> Erosion Control Matting        |
| <input type="checkbox"/> Vegetated Filter Strip                | <input type="checkbox"/> Temporary Seeding and Mulching |
| <input type="checkbox"/> Water Bar                             | <input type="checkbox"/> Broad-based Dip                |

Please check one of the following:

- ☒ All items checked above will be implemented to specifications as detailed in the Erosion & Sediment Control Program Manual\*\*\*\*\*
- ☐ Alternative Controls and/or specifications are proposed and are attached.

#### Maintenance Program

All erosion control devices will be inspected on a weekly basis and after each rainfall/snow melt event. Sediment will be removed from erosion control devices when sediment has reduced the erosion control's storage capacity of 50%. Sediment removed from the storage device will be placed in a location that is protected with erosion controls and will be seeded and mulched. Needed repairs or replacements of any erosion control devices will be made within 24 hours.\*\*\*\*\*

- ☒ I agree to follow the above maintenance program to ensure that all BMP's continually function before, during, and after construction.
- ☐ I will provide an alternative plan for site maintenance which will be included with this E&S plan to be approved by the district.

\*\*\*\*\*The Erosion & Sediment Pollution Control Program Manual (Manual) can be found at the link below. When choosing appropriate BMP's, please make sure you include a copy of the BMP detail. [www.elibrary.dep.state.pa.us/dsweb/Get/Document-88925/363-2134-008.pdf](http://www.elibrary.dep.state.pa.us/dsweb/Get/Document-88925/363-2134-008.pdf)

## 25 Pa. Code 260.1

### Recycling or Disposal of Material

Construction wastes such as, but not limited to, excess soil material, building material, concrete wash water, or sanitary wastes can adversely impact water quality. Measures should be in place and planned for control of the materials. Please identify recyclable and waste materials and indicate how they will be handled.

All building materials and wastes shall be removed from site and recycled or disposed of in accordance with the Department's Solid Waste Management Regulations at 25 Pa. Code 260.1 et seq., 271.1, and 287.1 et. seq. No building materials or wastes or unused building materials shall be burned, buried, dumped, or discharged at the site.

### Geological Formations

Please identify any natural occurring geologic formations or soil conditions that may have the potential to cause pollution during earth disturbance activities and include BMPs to avoid or minimize potential pollution and its impacts from such formations. (sinkholes, acid bearing rock, etc.)

☒ None known on site

☐

### Thermal Impacts

Identify BMPs used to avoid, minimize or mitigate potential increases to stream temperature from runoff. Check each control that will be used and show it on the plan drawing on Page 6.

☒

Distance to receiving waterway

☐

Maintain Riparian Buffer Areas

☐

Avoid Direct Discharge to Surface Waters

☐

Limit the Duration of Earth Disturbance Activities

☐

Vegetated Filter Strips

☐

Other

### Riparian Forest Buffers

Please identify existing and proposed riparian forest buffers\*\*\*\*\*.

☒

Not applicable to this site

☐

### Post Construction Stormwater Management

The E&S plan shall be planned, designed, and implemented to be consistent with the Post Construction Stormwater Management (PCSM) Plan under 25 Pa. Code 102.8. The E&S Plan must be a separate from the PCSM Plan and labeled "E&S" or "E&S Plan" (unless otherwise approved) and be the final plan for construction.

☐

A PCSM plan is separate and consistent.

☒

A PCSM plan is not required for this project.

☐

I will provide an alternative plan for approval.

\*\*\*\*\*When riparian forest buffers will be incorporated into a project site in accordance with 25 Pa. Code 102.14 as part of the PCSM Plan, the areas of existing buffers or the areas where buffers will be developed should be identified on the plan drawings. Certain restrictions on earthmoving within 150 feet in a special protection workshop and 100 feet in areas where a voluntary riparian buffer will be installed must be met for permitted sites. All proposed earthmoving, including installation of E&S BMPs must comply with those restrictions.



### Permanent BMP Controls

Prior to the completion of the project, any stage or phase of the earth disturbance activity requires immediate seeding, mulching or other protection from accelerated erosion and sedimentation. Implementation and maintenance of BMP's are required until the completion of permanent stabilization of the disturbed area. Permanent stabilization includes, uniform 70% perennial vegetative cover, of erosion resistance species or other acceptable BMP's that permanently minimize accelerated erosion and sedimentation.

- ☐ I will permanently stabilize this project by obtaining 70% uniform perennial vegetative cover, prior to removing any temporary BMP controls.
- ☐ I will provide an alternative plan for permanent stabilization which will be included with this E&S plan to be approved by the District.

### Sequence of Construction

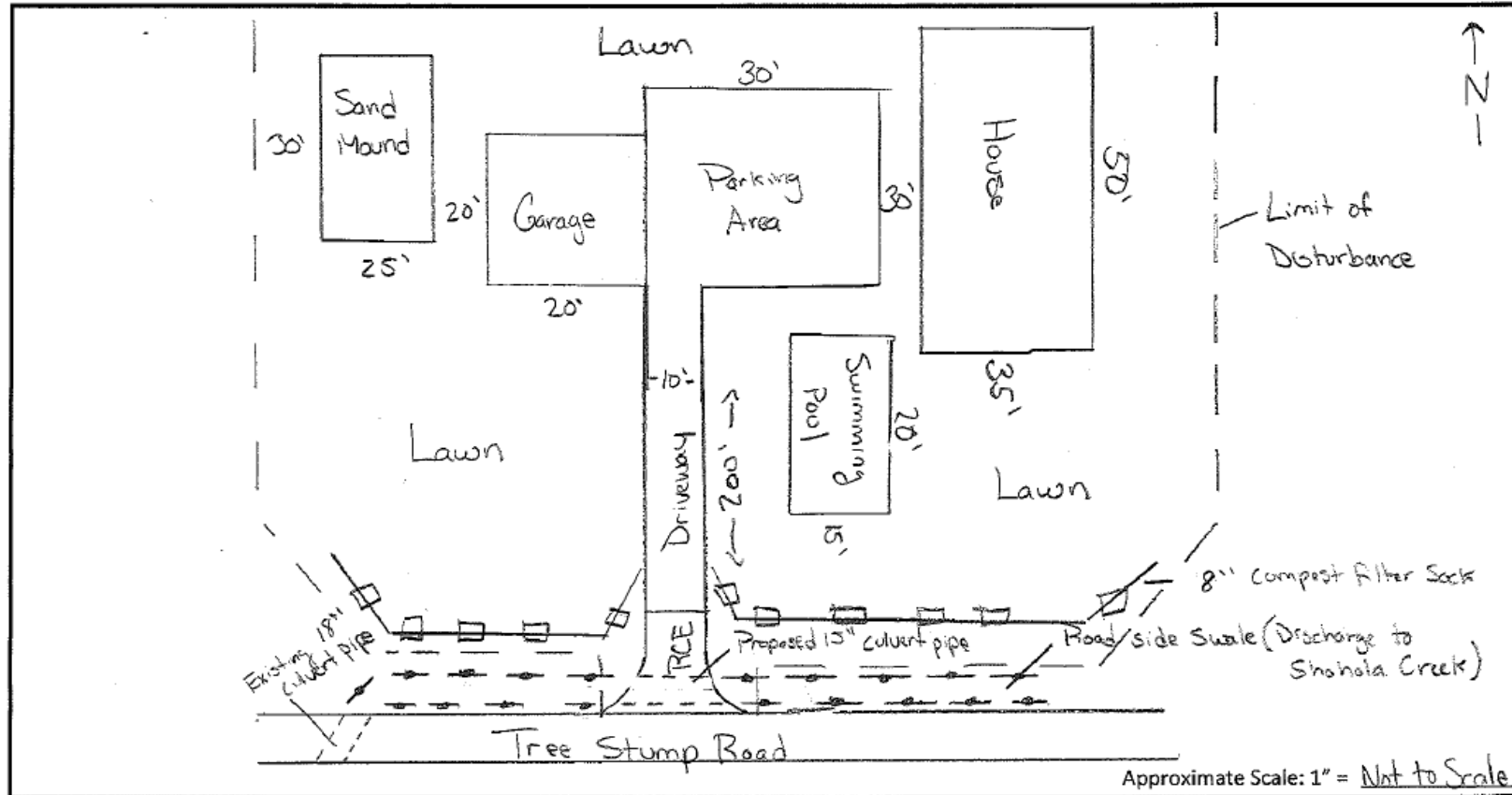
A detailed sequence of construction for installation and removal of BMPs in relation to the scheduling of earth disturbance activities is required. The sequence should explain in detail BMP Installation and removal, prior to, during and after earth disturbance activities to ensure the proper function of all BMPs.

1. Install rock construction entrance.
2. Install temporary erosion control BMPs. BMPs must be properly installed and operating before proceeding with the earth disturbance activities.
3. Site grading/excavating.
4. Temporary seeding and mulching of disturbed areas.
5. Building or project completion.
6. Install permanent erosion control BMPs (i.e. seed & mulch, stone, pavement, landscaping, etc.)
7. Remove temporary erosion control BMPs when a uniform 70% perennial vegetative cover, stone base, or pavement has been established over the entire disturbed area.

- ☐ I have read and understand the above sequence and plan to use this sequence for this project.
- ☐ I DO NOT plan to follow the above construction sequence. I will use the following sequence of construction:


### Erosion and Sediment Control Plan Drawing

Using the legend below, please sketch a drawing of your proposed project and label appropriately. Please include the location of BMP's used in the temporary controls and sequence of construction. Please indicate direction with an arrow indicating north.

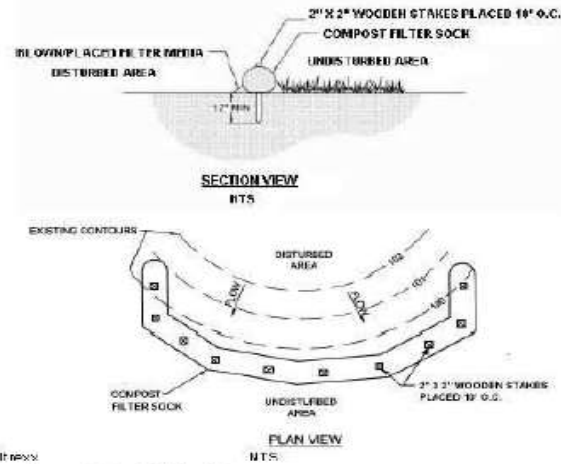


### LEGEND

Property Boundary		Driveway		Rock Construction Entrance	
Limit of Disturbance		Utilities		Compost Filter Sock	
Existing Structures		Stream		Filter Fabric Fence	
Proposed Structures		Floodway		Other	
Slope		Riparian Buffer			
Roadway		Wetland			

## Erosion and Sediment Control Best Management Practices-Details

**STANDARD CONSTRUCTION DETAIL #4-1  
COMPOST FILTER SOCK**



Compost shall meet the standards of Table 4.2.

Compost filter sock shall be placed at existing level grade. Both ends of the sock shall be extended at least 8 feet up slope at 45 degrees to the main sock alignment (Figure 4.1). Maximum slope length above any sock shall not exceed that shown on Figure 4.2. Stakes may be installed immediately downslope of the sock if so specified by the manufacturer.

Traffic shall not be permitted to cross filter socks.

Accumulated sediment shall be removed when it reaches half the above ground height of the sock and disposed in the manner described elsewhere in the plan.

Socks shall be inspected weekly and after each runoff event. Damaged socks shall be repaired according to manufacturer's specifications or replaced within 24 hours of inspection.

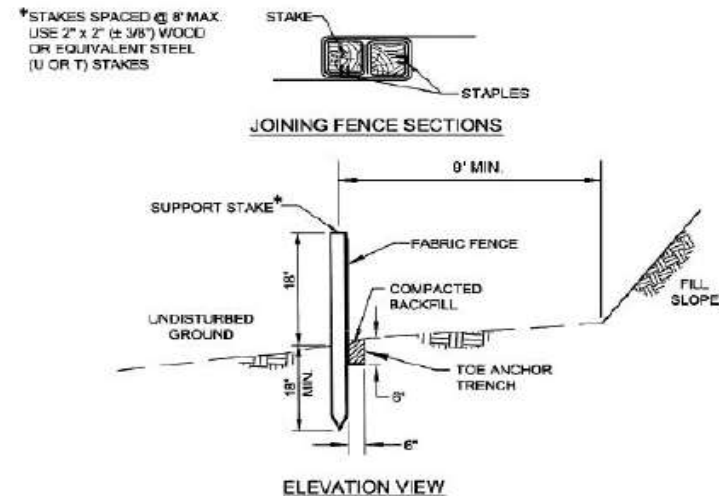
Biodegradable filter socks shall be replaced after 6 months; photodegradable socks after 1 year.

Polypropylene socks shall be replaced according to manufacturer's recommendations.

Upon stabilization of the area tributary to the sock, stakes shall be removed. The sock may be left in place and vegetated or removed. In the latter case, the mesh shall be cut open and the mulch spread as a soil supplement.



**STANDARD CONSTRUCTION DETAIL # 4-7  
Standard Silt Fence (18" High)**



PADEP

Fabric width shall be 30" minimum. Stakes shall be hardwood or equivalent steel (U or T) stakes.

Silt fence shall be placed at level existing grade. Both ends of the fence shall be extended at least 8 feet up slope at 45 degrees to the main fence alignment (see Figure 4.1).

Sediment shall be removed when accumulations reach half the above ground height of the fence.

Any section of silt fence which has been undermined or topped shall be immediately replaced with a rock filter outlet.

Fence shall be removed and properly disposed of when tributary area is permanently stabilized.

**TABLE 4.2  
Compost Standards**

Organic Matter Content	25% - 100% (dry weight basis)
Organic Portion	Fibrous and elongated
pH	5.5 - 8.5
Moisture Content	30% - 60%
Particle Size	30% - 50% pass through 3/8" sieve
Soluble Salt Concentration	5.0 dS/m (mmhos/cm) Maximum

## Erosion and Sediment Control Best Management Practices-Details

**TABLE 11.2**  
Soil Amendment Application Rate Equivalents

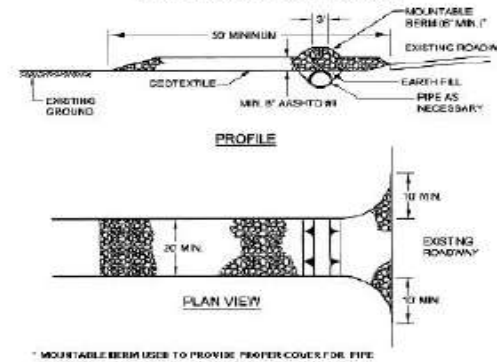
Soil Amendment	Permanent Seeding Application Rate			Notes
	Per Acre	Per 1,000 sq. ft.	Per 1,000 sq. yd.	
<b>Agricultural lime</b>	6 tons	240 lb.	2,400 lb.	Or as per soil test; may not be required in agricultural fields
<b>10-10-20 fertilizer</b>	1,000 lb.	25 lb.	210 lb.	Or as per soil test; may not be required in agricultural fields
<b>Temporary Seeding Application Rate</b>				
<b>Agricultural lime</b>	1 ton	40 lb.	410 lb.	Typically not required for top soil stockpiles
<b>10-10-10 fertilizer</b>	500 lb.	12.5 lb.	100 lb.	Typically not required for top soil stockpiles

Adapted from Penn State, "Erosion Control and Conservation Plantings on Noncropland"

Temporary Seeding (Full Sun or Shade)	
Choose one of the following:	Pounds per Acre
Annual Rye Grass (or)	40
Spring Oats (or)	96
Winter Wheat (or)	180
Winter Rye	168

<b>Permanent Seeding</b>	
These mixes may be left unmown or used as a landscape turf. Look for seed mixes containing the following varieties for your site conditions. Apply approximately 250 pounds of seed per acre or 6 pounds per 1000 sq. ft.	
<b>Full Sun-mix should include:</b>	<b>Shade-mix should include</b>
Creeping fescue or Creeping red fescue	Creeping red fescue
Fine fescue	Chewings fescue
Kentucky bluegrass	Hard fescue
Perennial rye	Annual rye grass as a cover crop
Annual rye as cover crop	
Add 15 pounds of white clover to mix for improved nitrogen utilization.	

**STANDARD CONSTRUCTION DETAIL # 3-1**  
Rock Construction Entrance



Modified from Maryland DOE

Remove topsoil prior to installation of rock construction entrance. Extend rock over full width of entrance.

Runoff shall be diverted from roadway to a suitable sediment removal BMP prior to entering rock construction entrance.

Mountable berm shall be installed wherever optional culvert pipe is used and proper pipe cover as specified by manufacturer is not otherwise provided. Pipe shall be sized appropriately for size of ditch being crossed.

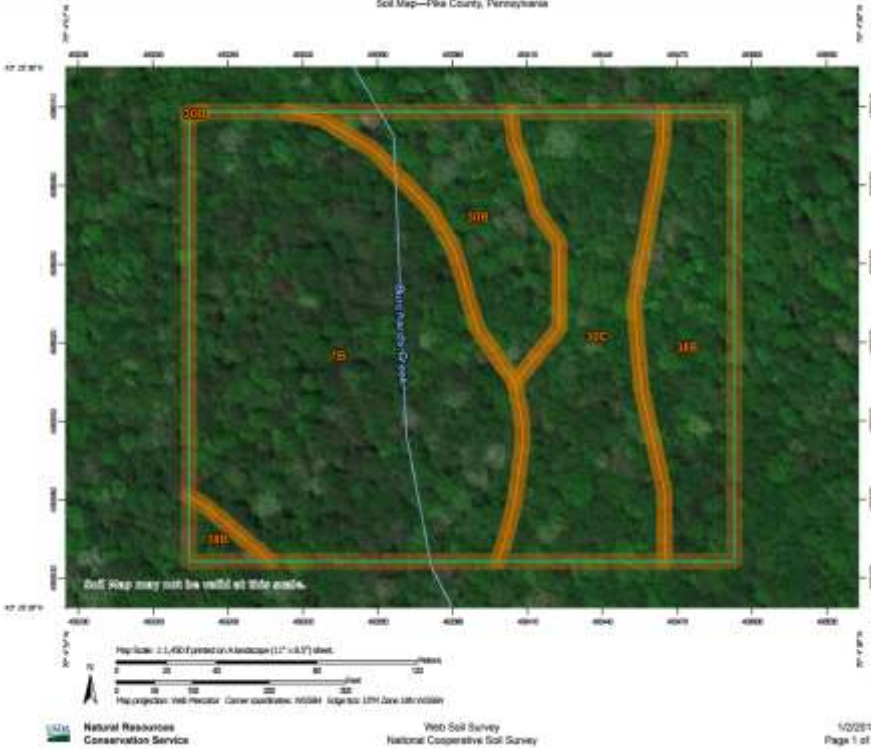
**MAINTENANCE:** Rock construction entrance thickness shall be constantly maintained to the specified dimensions by adding rock. A stockpile shall be maintained on site for this purpose. All sediment deposited on paved roadways shall be removed and returned to the construction site immediately. If excessive amounts of sediment are being deposited on roadway, extend length of rock construction entrance by 50 foot increments until condition is alleviated or install wash rack. Washing the roadway or sweeping the deposits into roadway ditches, sewers, culverts, or other drainage courses is not acceptable.

Additional guidance for developing an Erosion and Sediment Control plan can be located within the "Pennsylvania Department of Environmental Protection Erosion and Sediment Pollution Control Program Manual" (Technical Guidance Number 363-2134-008)



# Other Attachments

- ▶ Topographic Map [102.4(b)(5)(i)]
  - ▶ [USGS](#)
- ▶ Soils Map [102.4(b)(5)(ii)]
  - ▶ [Web Soil Survey](#)



Project Location

## Map Unit Legend

Map Unit Symbol	Map Unit Name	Acres in AOI	Percent of AOI
7B	Shohola-Edgemere complex, 0 to 8 percent slopes, very rubbly	4.7	50.0%
30B	Wurtsboro stony fine sandy loam, 0 to 8 percent slopes, extremely stony	1.1	11.4%
30C	Wurtsboro stony fine sandy loam, 8 to 15 percent slopes, extremely stony	2.1	22.2%
38B	Swartswood stony fine sandy loam, 0 to 8 percent slopes, extremely stony	1.5	16.4%
Totals for Area of Interest		9.3	100.0%



# After Completing Erosion and Sediment Control Plan

- ▶ E&S Plan shall be available for review and inspection by the Department or the Conservation District at the project site during all stages of the earth disturbance activity. [102.4(b)(7)]
- ▶ An E&S Plan should be submitted to the Conservation District if:
  - ▶ 1. Municipality requires an E&S Plan to be reviewed and approved
  - ▶ 2. The Conservation District requests submittal of an E&S Plan
  - ▶ 3. If earth disturbance activity is associated with a Department of Environmental Protection (DEP) Permit.



# Submitting to the District



Pike County  
Conservation District

556 Route 402, Suite 1 • Hawley, PA 18428 • Tel: (570) 226-8220

## Pike County Conservation District Plan Review Application Form

Project Name John Doe Single Family Home  
Date Submitted January 25, 2018  
Municipality Shohola  
Receiving Watercourse Shohola Creek  
Total Project Acres 2.5 Acres  
Total Disturbed Acres 0.80 Acres

### Project Description

Construction of Single Family Home with Driveway Access and On-Lot Septic System.

### Detailed Directions

From I-84 Westbound: Take Exit 30 Blooming Grove to Route 402 North; From Route 402 North turn right onto Route 6 East; Travel 2.6 Miles then turn left onto Tree Stump Road; Travel 1.2 Miles on Tree Stump Road; Destination on right.

### APPLICANT/OWNER INFORMATION

Name John Doe  
Contact Person \_\_\_\_\_  
Address 555 ABC Drive  
City Hawley  
State PA Zip Code 18428  
Phone (555) 555-5555  
Email JDOE@gmail.com

### TYPES(S) OF PLAN(S) (check all that apply):

- ☒ Erosion & Sediment Control (E&S) Plan  
☐ Erosion & Sediment Control Permit  
☐ NPDES Individual Permit  
☐ NPDES General Permit

### FEES ENCLOSED (Specify all that apply):

#### District Fee for Services

Check payable: Pike County Conservation District  
\$ 150.00

#### Administrative Filing Fee

Check payable: Pike County Conservation District  
Clean Water Fund

\$ \_\_\_\_\_ General NPDES or ESCGP-2

\$ \_\_\_\_\_ Individual NPDES or ESCP

#### Commonwealth Disturbed Acre Fee

Check payable: Commonwealth of PA Clean Water Fund

\$ \_\_\_\_\_ Applies to ESCP/ESCGP-2 and  
Individual/General NPDES permit

### PLAN DESIGNER/CONSULTANT INFORMATION

Name \_\_\_\_\_  
Contact Person \_\_\_\_\_  
Address \_\_\_\_\_  
City \_\_\_\_\_  
State \_\_\_\_\_ Zip Code \_\_\_\_\_  
Phone \_\_\_\_\_  
Email \_\_\_\_\_

The enclosed plans have been prepared in accordance with the requirements of Title 25, Chapter 102 Erosion and Sediment Control, The Clean Streams Law and the guidelines of the DEP Erosion and Sediment Pollution Control Program Manual, and, if applicable, Chapter 92 National Pollutant Discharge Elimination System, Chapter 93 Water Quality Standards and the guidelines of the PA Stormwater Best Management Practices Manual.

The undersigned agrees to comply with all requirements and guidelines referenced above, authorizes the Pike County Conservation District to make inspections as necessary, and further agrees to obtain all necessary federal, state, and local permits associated with this project.

Signature of Applicant/Agent

Print Name

Date

**106. FEE SCHEDULE FOR DISTRICT SERVICES:** The fees described in Section 106 are separate from and in addition to the fees described in Section 107 below and shall not be combined with any other state, county or municipal fees. Checks for District Fees described in this section shall be payable to the Pike County Conservation District. The cancelled check will be the applicant's receipt.

A. The following District Fee Schedule for District Services will apply for E&S services provided by the Pike County Conservation District.

1. For Chapter 105 General Permit-related E&S plans that are not part of a larger plan of development, there will be a standard District fee of \$100.
2. For Timber Harvest-related E&S plans that are not part of a larger plan of development, there will be a standard District fee of \$100 plus \$10 per disturbed acre for all disturbance up to 25 acres. For timber harvest earth disturbance activities over 25 acres 107(A) will apply.
3. For applications/plans associated with earth disturbance activities that are less than one acre of earth disturbance there will be a District Fee for Services of \$150.
4. For applications/plans associated with earth disturbance activities that are more than one acre of earth disturbance, there will be a District Fee for Services of \$200 per disturbed acre. For fractional acreage, the acreage shall be rounded to the closest whole number.

### Examples:

for 3.3 disturbed acres:  $3 \times \$200 = \$600$  fee

for 4.6 disturbed acres:  $5 \times \$200 = \$1000$  fee

B. For multi-county projects, the above fees apply only to disturbed acres within Pike County.

C. For each E&S plan revision submitted for review there will be a charge of 50% of the original Fee for Services.

D. For previously approved plans resubmitted with revisions but involving the same original scope of work/earth disturbance acreage there will be a charge of 25% of the original Fee for Services. A minimum fee of \$50 will apply.



# Pike County Conservation District

Christopher Ingulli  
Resource Conservationist  
556 Route 402  
Hawley, PA 18428

Phone: (570) 226-8220  
Fax: (570) 226-8222  
Email: [cingulli@pikepa.org](mailto:cingulli@pikepa.org)

[www.pikeconservation.org](http://www.pikeconservation.org)